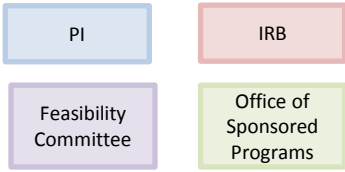
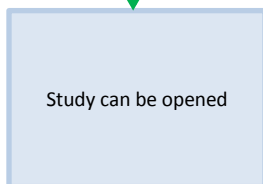
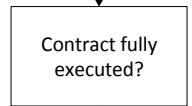
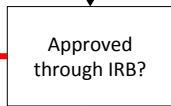
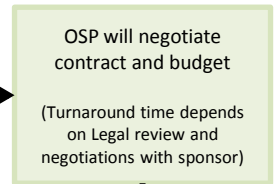
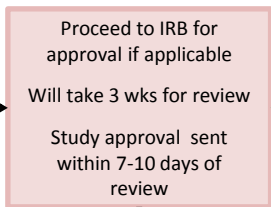
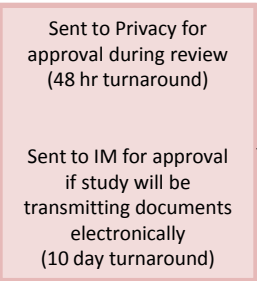
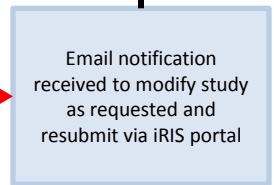
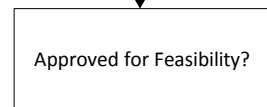
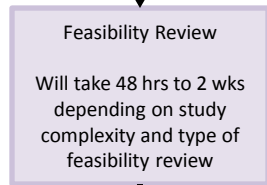
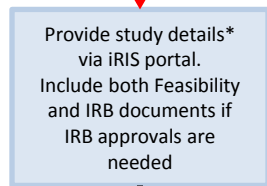
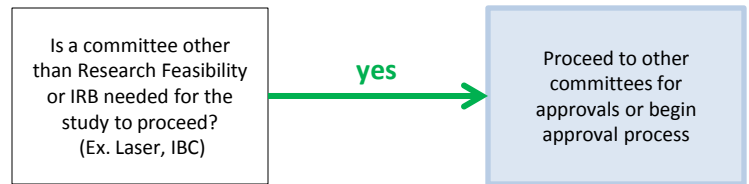


# Process for Opening a Research Study

Key:



\*Information Required:  
 Research Feasibility Forms  
 Research Protocol  
 Preliminary Budget  
 Draft Contract  
 Consent Forms  
 Data Abstraction Forms  
 HIPAA Authorization  
 (Not all documents required based on type of study)



Please note: Turnaround times are approximate

Created Dec 2015