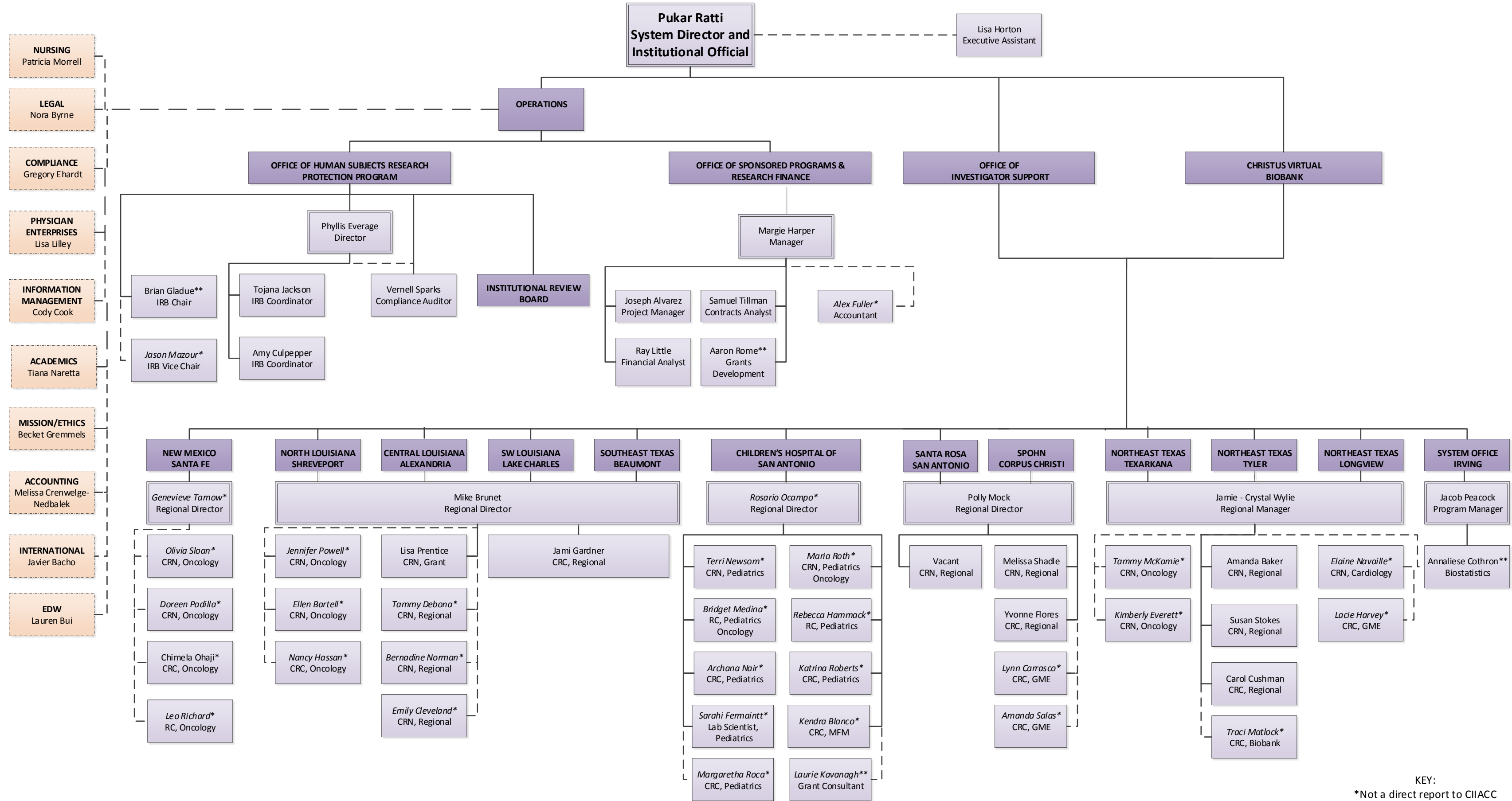


**CHRISTUS INSTITUTE FOR INNOVATION & ADVANCED CLINICAL CARE (CIIACC)
ORGANIZATIONAL CHART**



KEY:
 *Not a direct report to CIIACC
 **Consultant
 CRC: Clinical Research Coordinator
 CRN: Clinical Research Nurse
 RC: Regulatory Coordinator