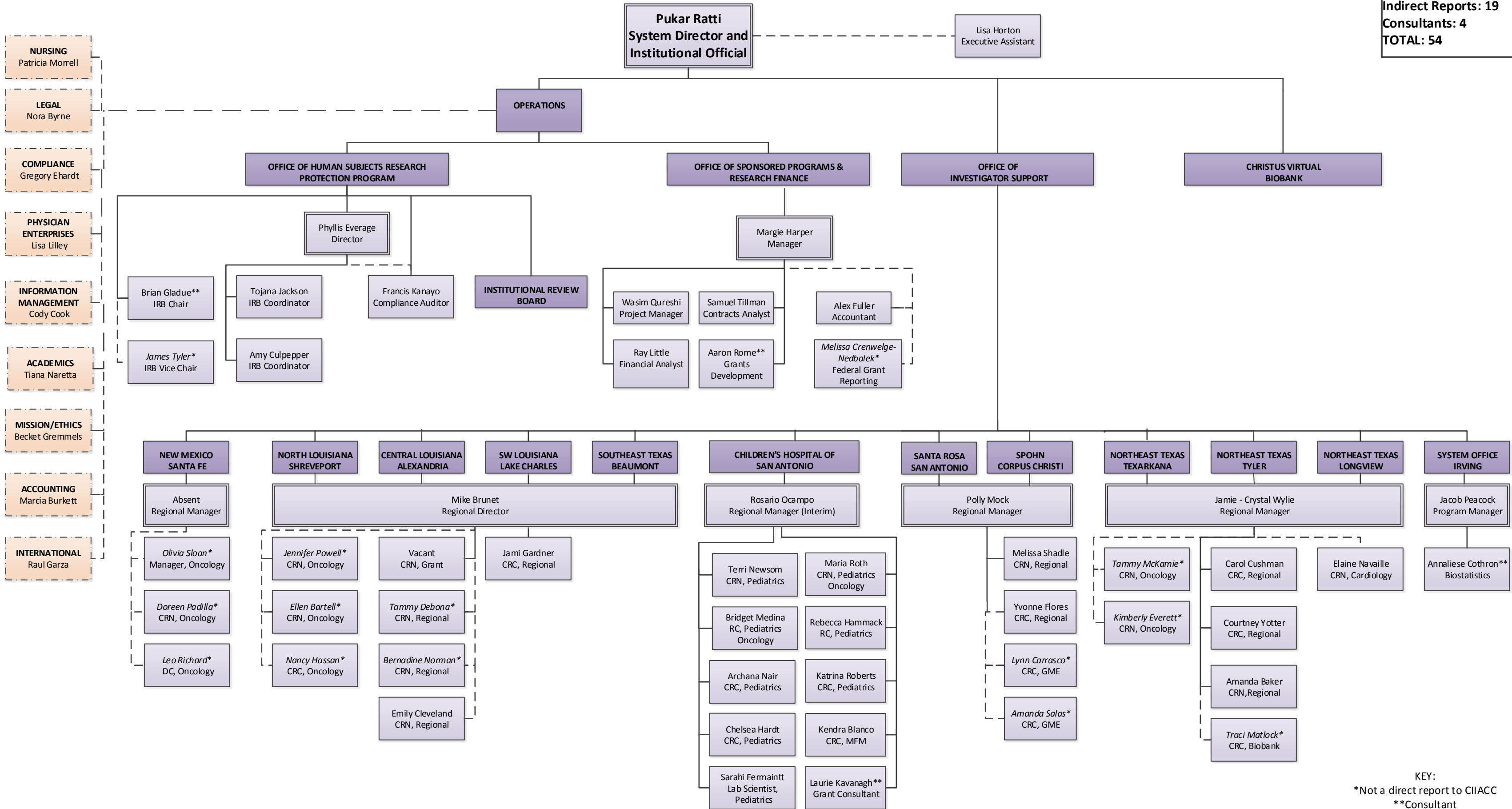


**CHRISTUS INSTITUTE FOR INNOVATION & ADVANCED CLINICAL CARE (CIIACC)
ORGANIZATIONAL CHART**

STAFFING SUMMARY:
Direct Reports: 31
Indirect Reports: 19
Consultants: 4
TOTAL: 54



KEY:
*Not a direct report to CIIACC
**Consultant
CRC: Clinical Research Coordinator
CRN: Clinical Research Nurse
RC: Regulatory Coordinator
DC: Data Coordinator