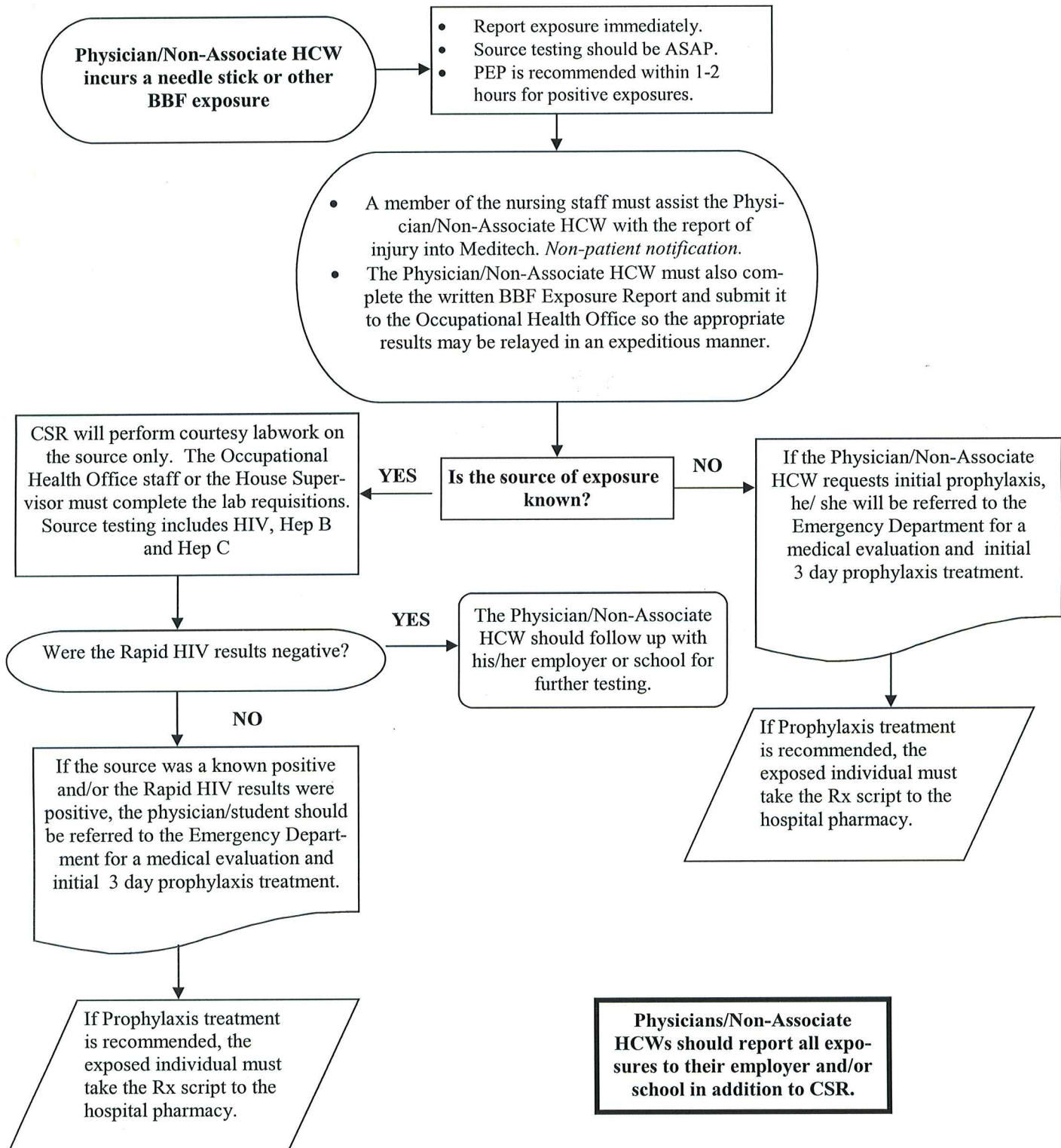


# Physician/Non-Associate Health Care Workers (HCW)

## Protocol for Blood/Body Fluid (BBF) Exposures

During Regular Business Hours (M-F 8am-4:30pm): Report to Occupational Health

After Hours & Weekend: Report to the Nursing House Supervisor



You will be contacted by a member of the Occupational Health staff or the Nursing Supervisor with the results of the labwork. Please do not contact the lab directly.

**\*\* Physicians/Non Associate HCWs should report all exposures to their employer and/or school in addition to CSR.**